

outdooractive 

# Geodaten als Schlüssel für Innovationen

Silvan Kaspar

A world map with a light blue background and yellowish-green landmasses. A black rectangular box is centered over the map, containing the text "Die GRUNDLAGE". The map includes dashed lines for latitude and longitude, and a dashed line indicating the map's boundaries.

# Die GRUNDLAGE

# Vision

Die beste **OUTDOOR-KARTE** als nahtlos integrierter Bestandteil des Produktes

# Zielgruppe

**OUTDOOR-TOURIST**

**vom Unerfahrenen bis zum Experten**

# Mission

Relevante Daten sammeln und in **EINER**  
präzisen Outdoor-Karte zusammenführen



# KARTE



analysieren



integrieren



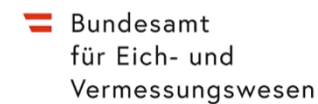
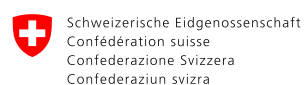
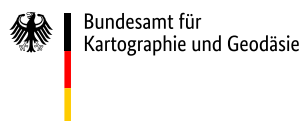
attributieren



verwalten



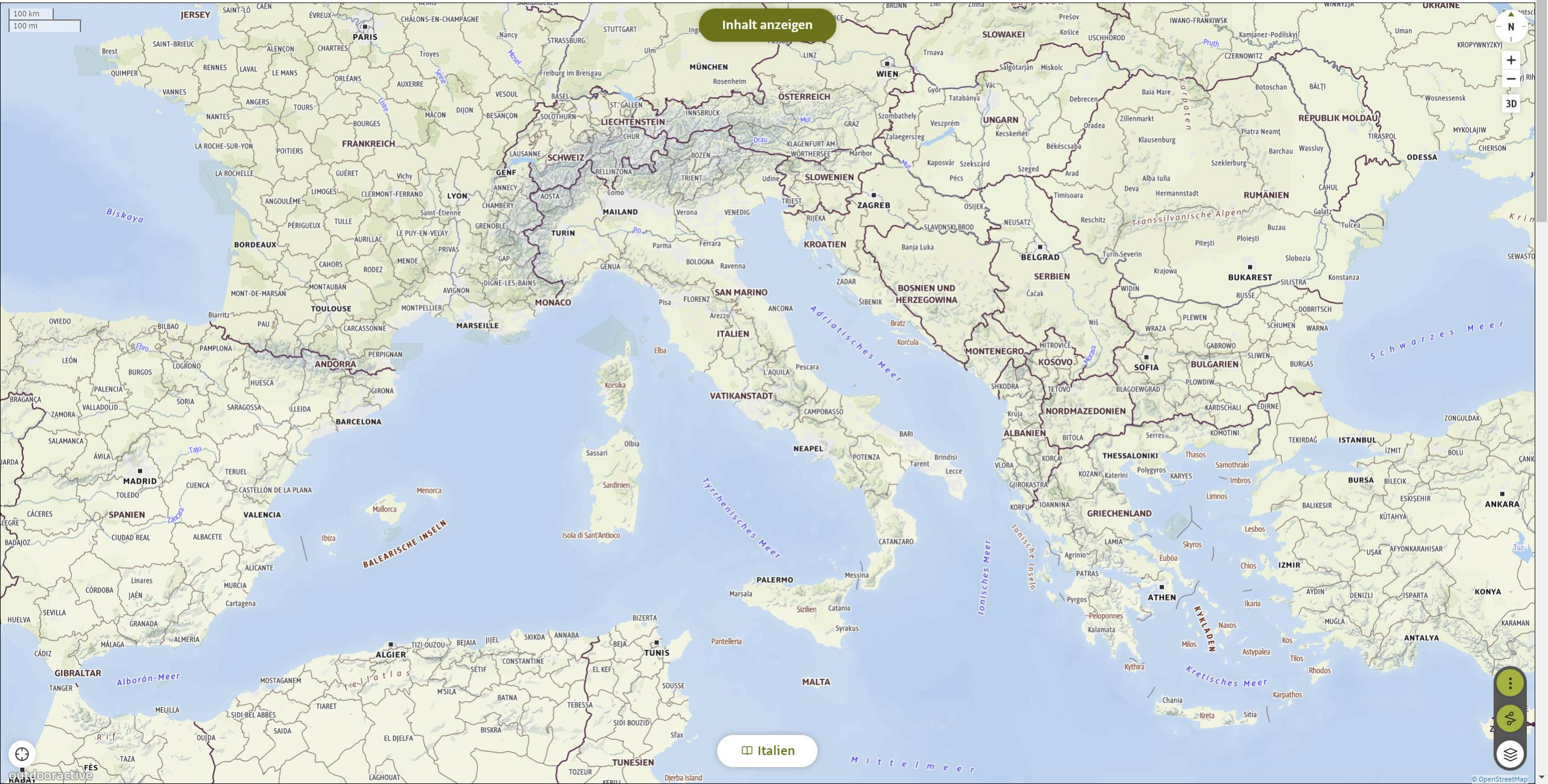
verteilen



A world map with a light blue background and yellowish-green landmasses. A black rectangular box is centered over the Atlantic and Indian Oceans, containing the text 'Die KARTE'. Dashed lines form a grid across the map, and decorative dashed lines are on the left and right sides.

# Die KARTE

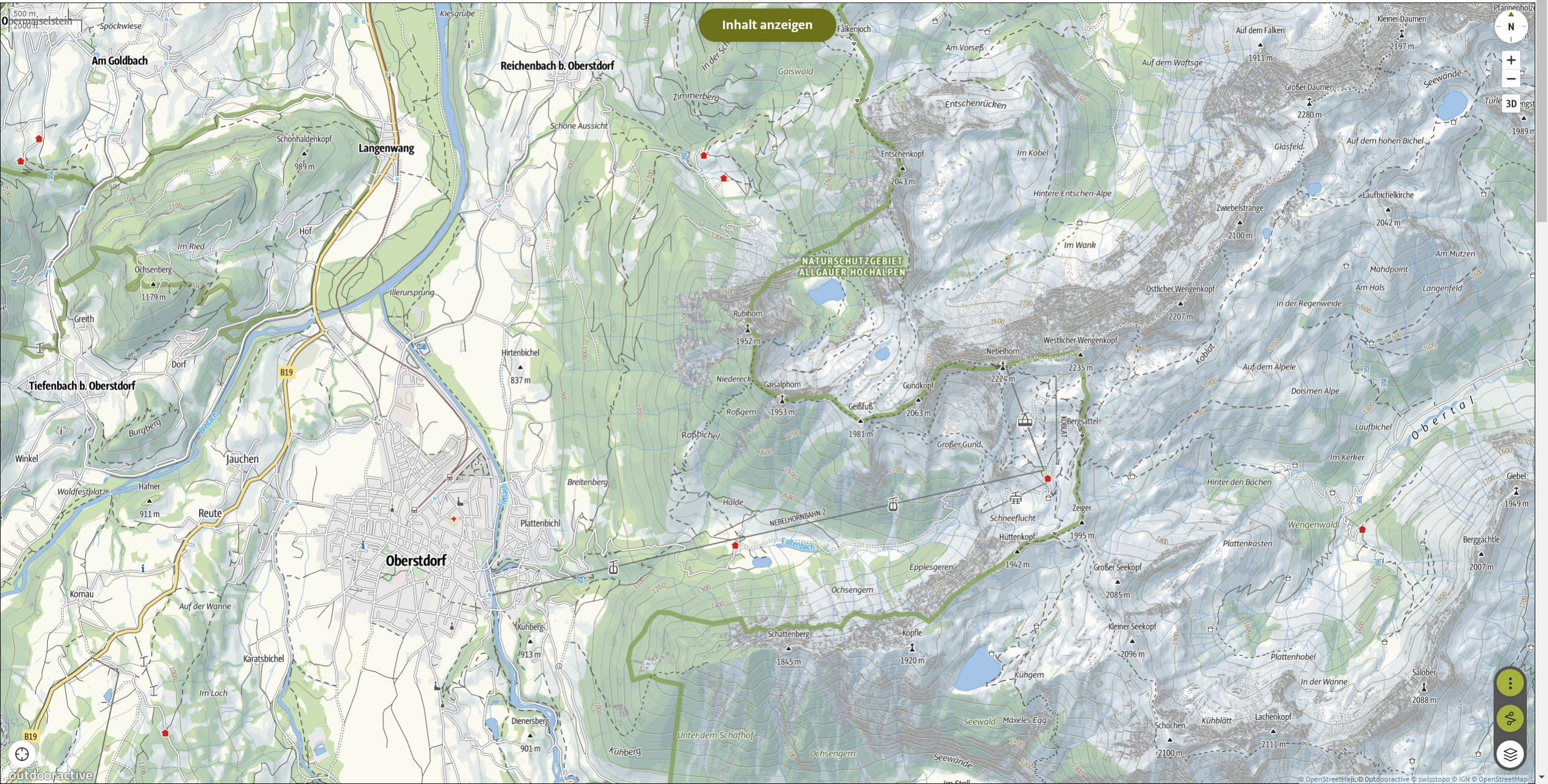
Suche nach Orten, Regionen, Koordinaten, ...



Inhalt anzeigen

Italien



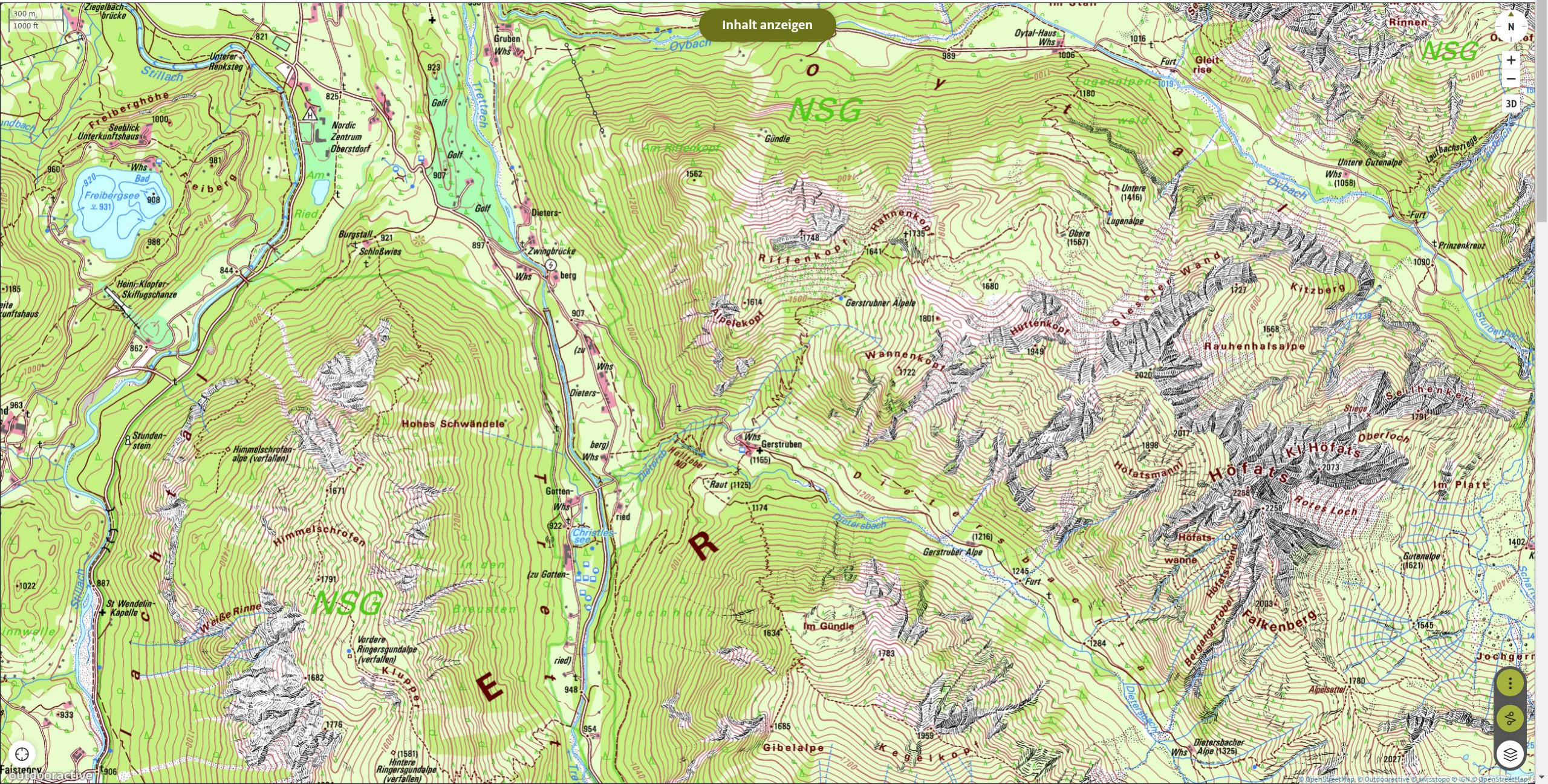


Inhalt anzeigen

NATURSCHUTZGEBIET ALLGÄUER HOCHALPEN



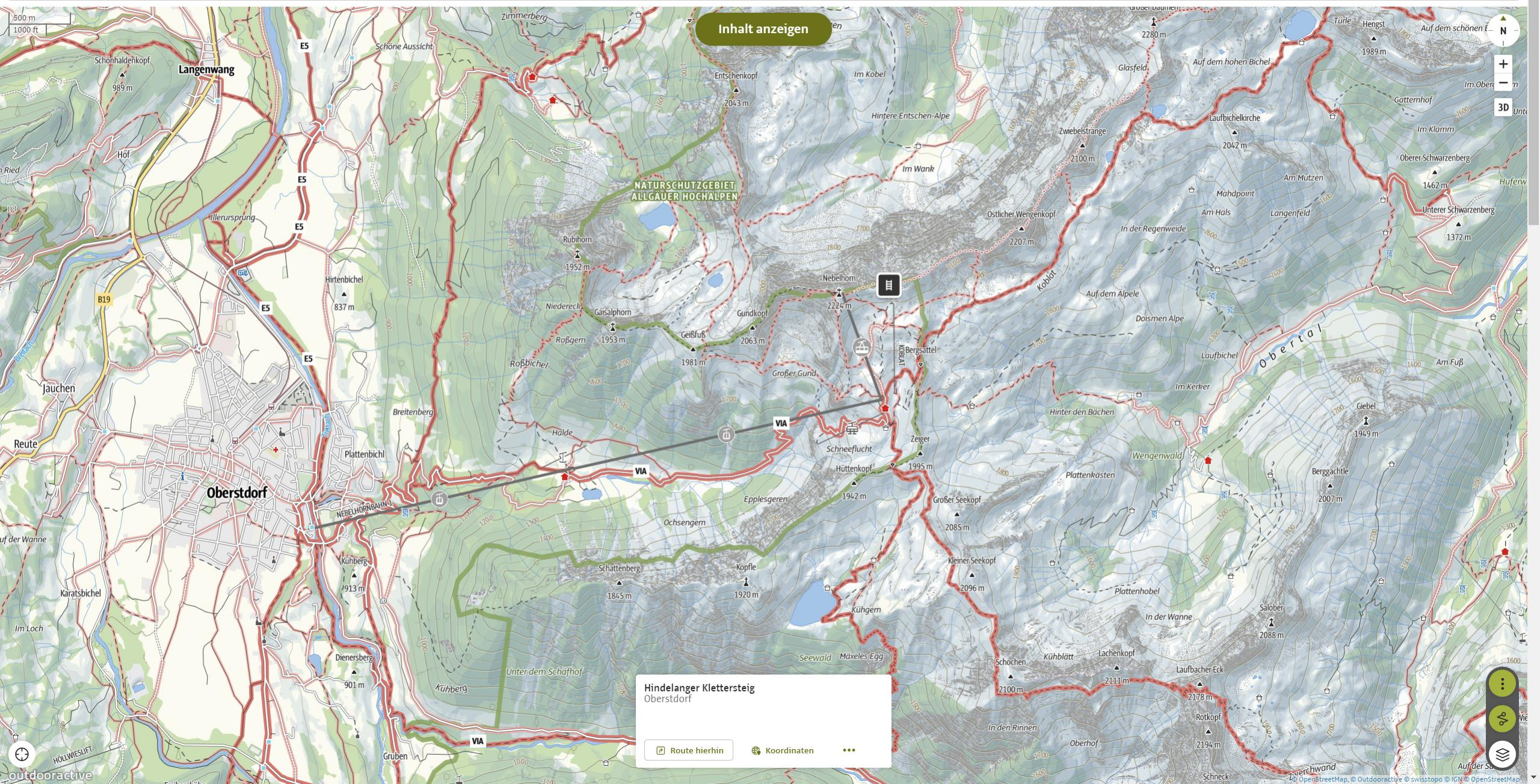
Inhalt anzeigen



A world map with a light blue background and yellowish-green landmasses. A black rectangular box is centered over the map, containing the text "Das WEGENETZ". The map includes dashed lines representing latitude and longitude, and a dashed line outline of the continents.

# Das WEGENETZ

Suche nach Orten, Regionen, Koordinaten, ...



Inhalt anzeigen

NATURSCHUTZGEBIET ALLGÄUER HOCHALPEN

**Hindelanger Klettersteig**  
Oberstdorf

Route hierhin    Koordinaten    ...

### Suche verfeinern

#### Verantwortliche

nur Standorte mit offenen Aufgaben anzeigen

#### Regionen

Standorte der hinzugefügten Region ausblenden

#### Suche

#### Standortnummer

#### Standortbezeichnung (optional)

#### Typ

#### Touristische Wege

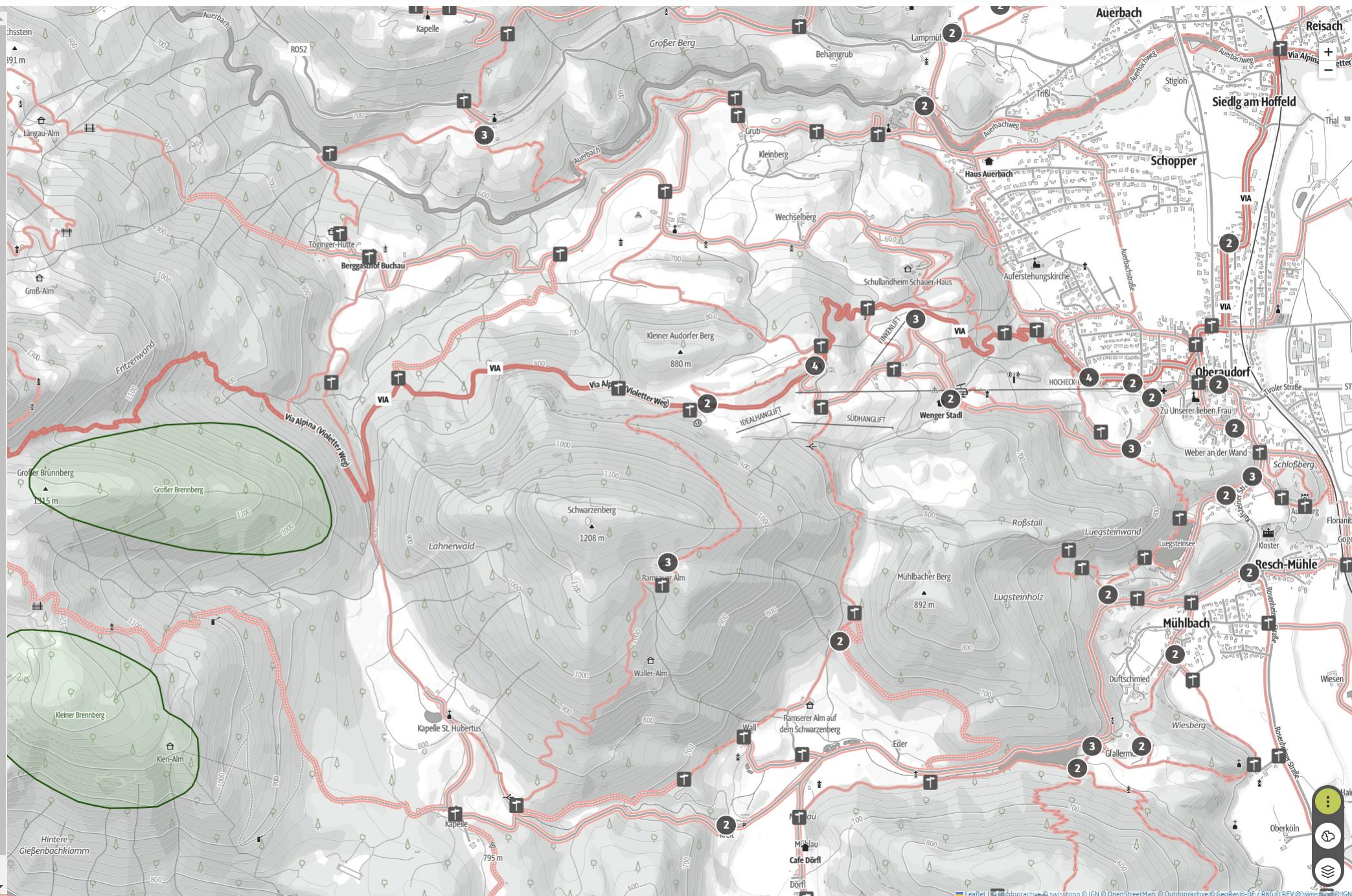
#### Aktivitäten

#### Bearbeitungsstand

- Neu
- In Bearbeitung
- Bearbeitung abgeschlossen
- Zurückgewiesen zur Überarbeitung
- Genehmigt
- Veröffentlicht
- Gelöscht

#### Datum

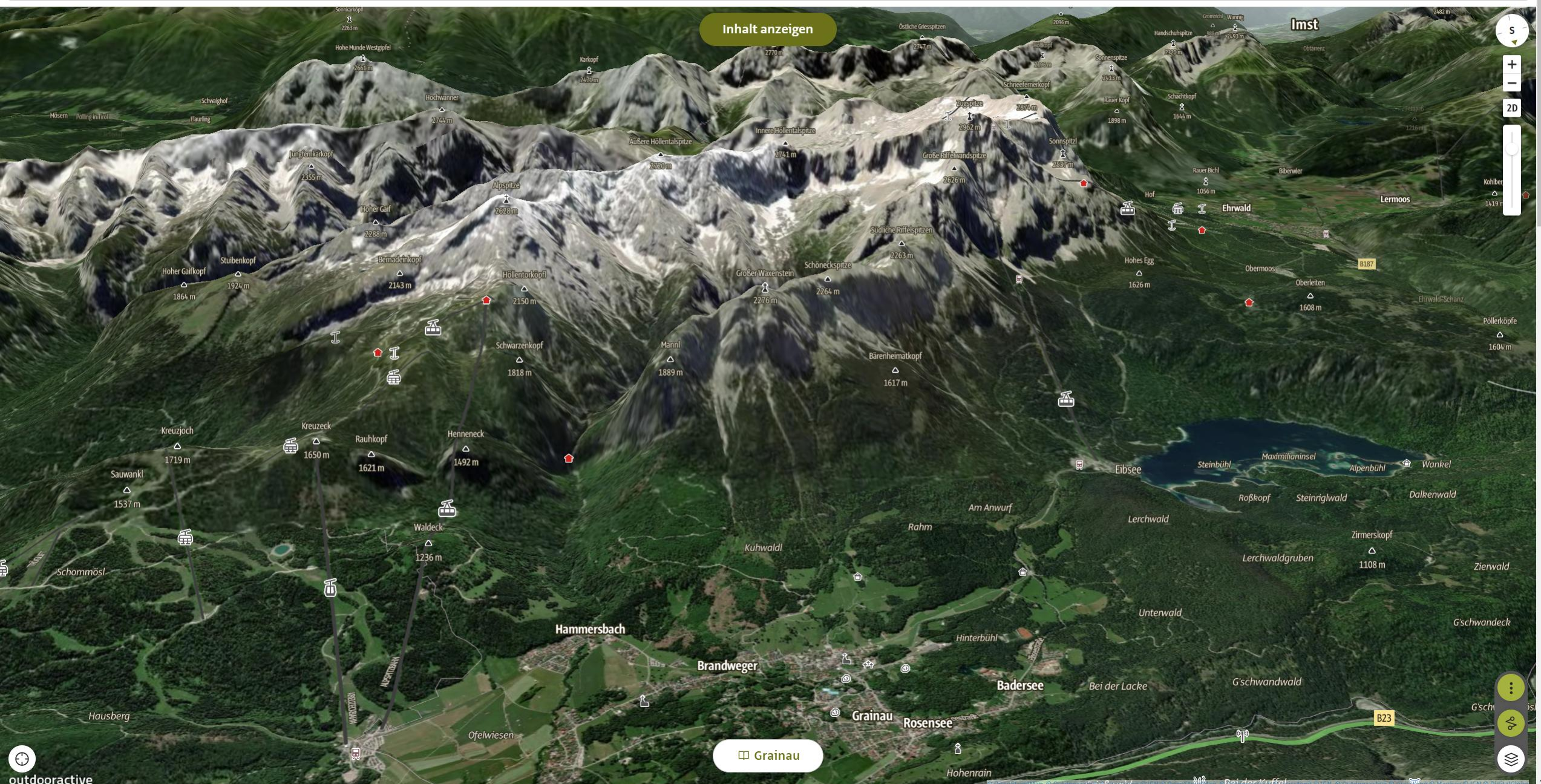
#### Sortieren nach



A world map showing terrain elevation with a color scale from light yellow (low) to dark brown (high). The map is overlaid with a dashed grid. A black rectangular box is centered over the map, containing the text 'Das GELÄNDEMODELL'.

# Das GELÄNDEMODELL

Suche nach Orten, Regionen, Koordinaten, ...



Inhalt anzeigen

Grainau

Imst

Hammersbach

Brandweger

Badersee

Grainau

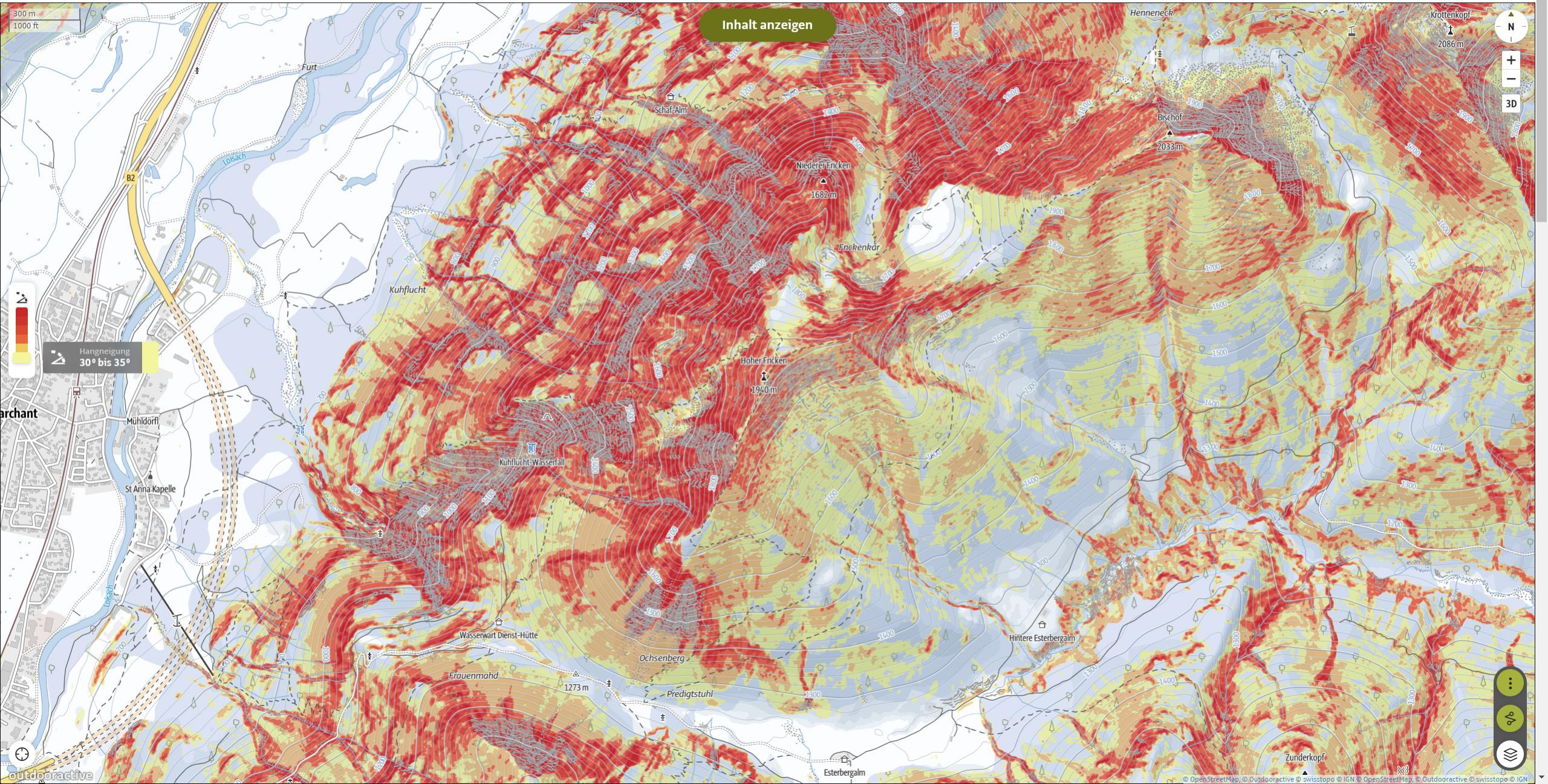
Rosensee

Hohenrain

G'schwendwald

B23

Suche nach Orten, Regionen, Koordinaten, ...



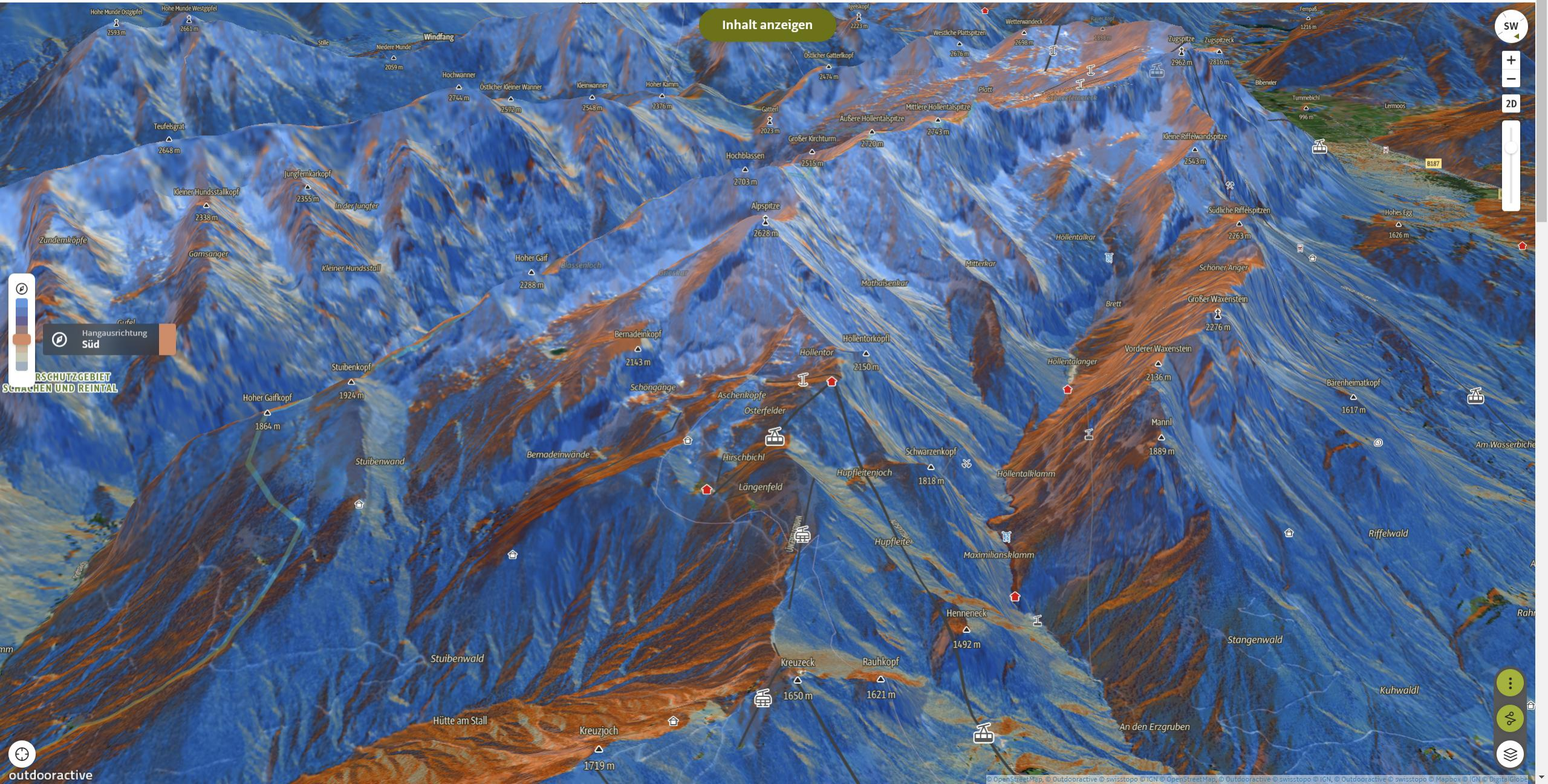
Navigation controls including a north arrow, zoom in (+) and zoom out (-) buttons, a 3D view toggle, and a globe icon.

Legend for slope, showing a color gradient from yellow to red and a text box indicating 'Hangneigung 30° bis 35°'.

Additional navigation controls including a search icon, a compass, and a home button.



Suche nach Orten, Regionen, Koordinaten, ...



Inhalt anzeigen



Hangausrichtung Süd

RSCHUTZGEBIET  
SCHNACHEN UND REINTAL

Inhalt anzeigen

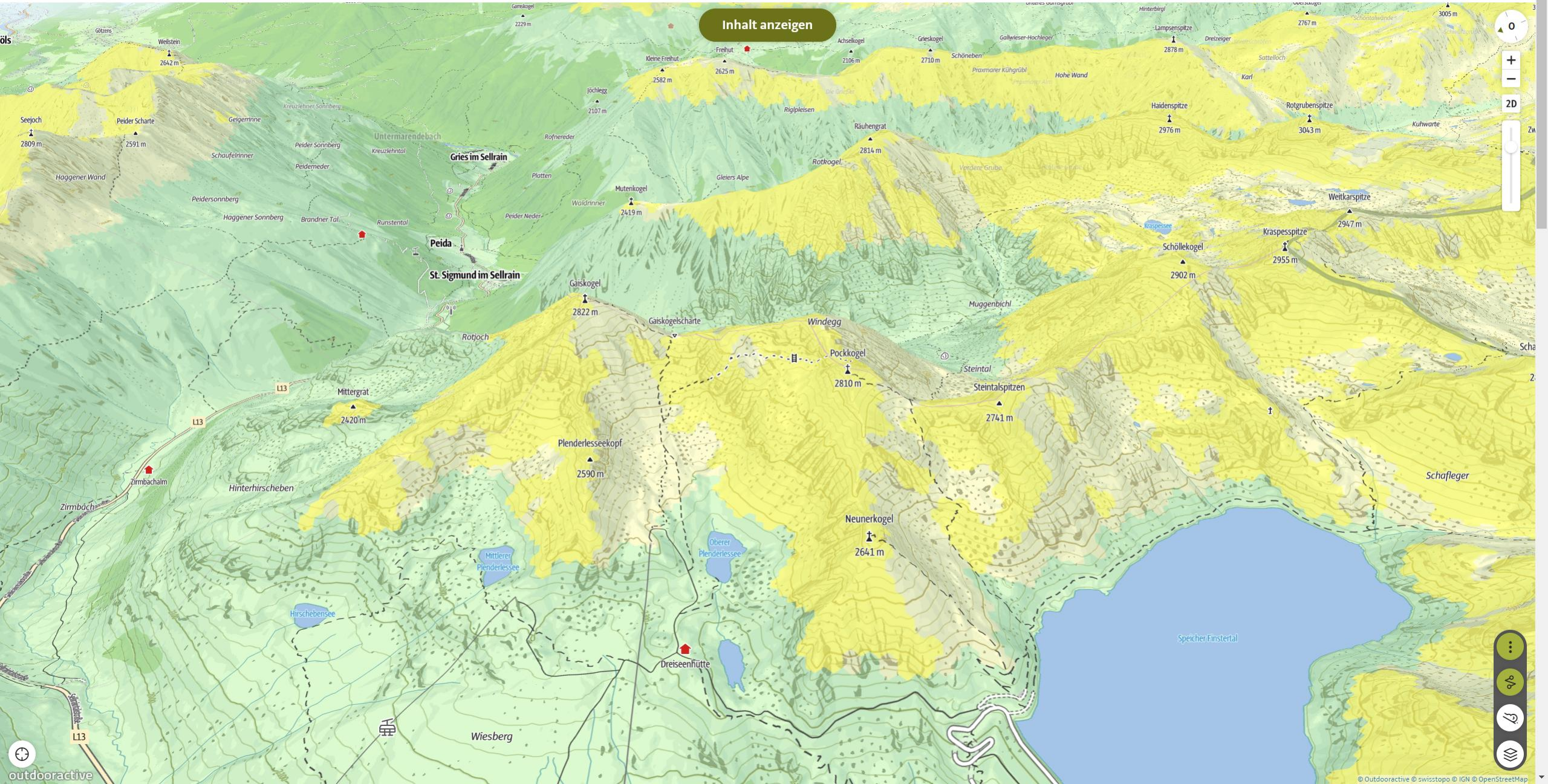


Navigation controls including a home button (0), zoom in (+), zoom out (-), 2D view, and a vertical slider.

Map interaction icons including a menu (three dots), a compass, a location pin, and a zoom in/out symbol.



Inhalt anzeigen



Navigation controls including a compass, zoom in (+) and zoom out (-) buttons, a 2D view button, and a vertical slider for map height.

Bottom navigation bar with icons for home, search, and other functions.

A world map with a light blue background and yellowish-green landmasses. A black rectangular box is centered over the map, containing the text "Die ZUKUNFT". The map includes dashed lines for latitude and longitude, and a dashed line that forms a frame around the central text box.

**Die ZUKUNFT**



[EuroGeographics](#) > [Maps for Europe](#)

# Maps for Europe

## National authoritative data

EuroGeographics facilitates access to official, reliable, comparable and verifiable geospatial data from the European National Mapping, Cadastre and Land Registry Authorities.

Use our map to find out what national data is available from our members.

## Open Maps For Europe & OME2

Free to use open data created using official map, geospatial and land information from official, national sources. The Open Maps For Europe project, which was completed in December 2022, was co-financed by the Connecting Europe Facility of the European Union.

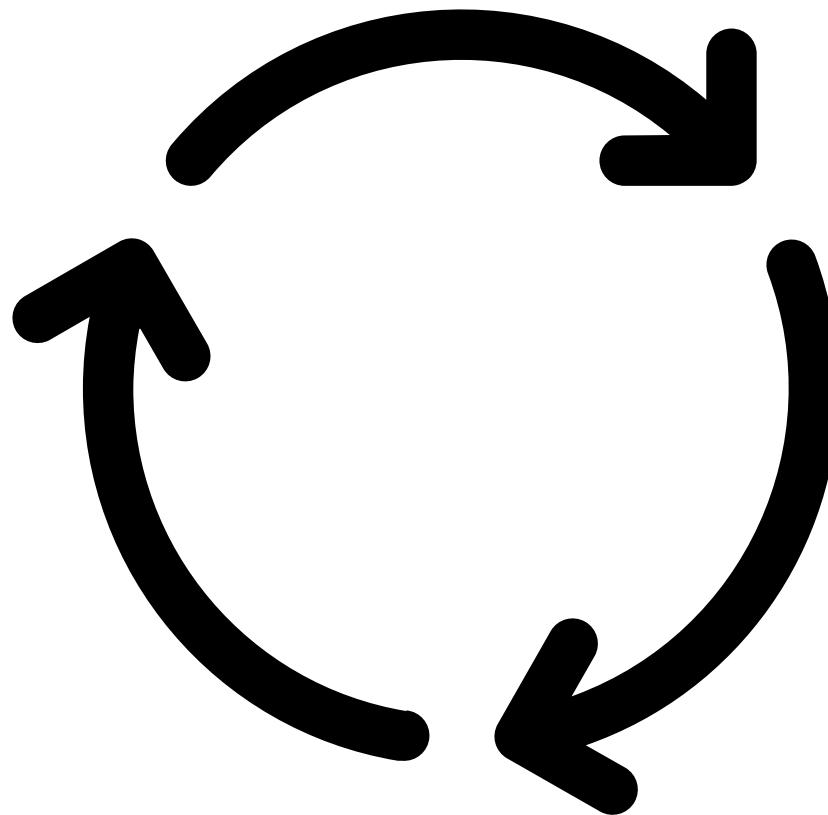
OME2, co-funded by the European Union, builds on its success by developing a production process and high-value, large-scale pan-European prototype.



## Pan-European administrative boundaries

EuroBoundaryMap enables the exact matching of administrative areas in 56 European countries and territories using geospatial data from 39 EuroGeographics members. Available at 1:100 000 scale, it contains geometry, names and codes of administrative and statistical units, and links to the updated statistical LAU- and NUTS-

	<b>OME2 Project</b>	OME2 is developing a new production process, technical specification and high-value, large-scale pan-European prototype. It is co-funded by the European Union.	>
	<b>Open Data</b>	Open Maps for Europe is a new online service that provides free to use maps from more than 40 European countries.	>
	<b>EuroGlobalMap</b>	EuroGlobalMap is 1:1 million scale harmonised European open data.	>
	<b>EuroRegionalMap</b>	EuroRegionalMap provides multi-themed topographic open data at 1:250 000 scale.	>
	<b>EuroDEM</b>	EuroDEM is a 1:100 000 scale digital open data elevation model providing height data.	>
	<b>Pan-European Imagery</b>	10 metre resolution high-quality open data images and mosaics as uniform reference products for mapping and visualisation	>
	<b>Open Gazetteer</b>	An open gazetteer service providing authoritative multilingual geographical names.	>
	<b>Open Cadastral Map</b>	Open Cadastral Map prototype. First iteration includes Poland, The Netherlands, Czech	>



Karte

outdooractive  30

**Danke.**

Silvan Kaspar